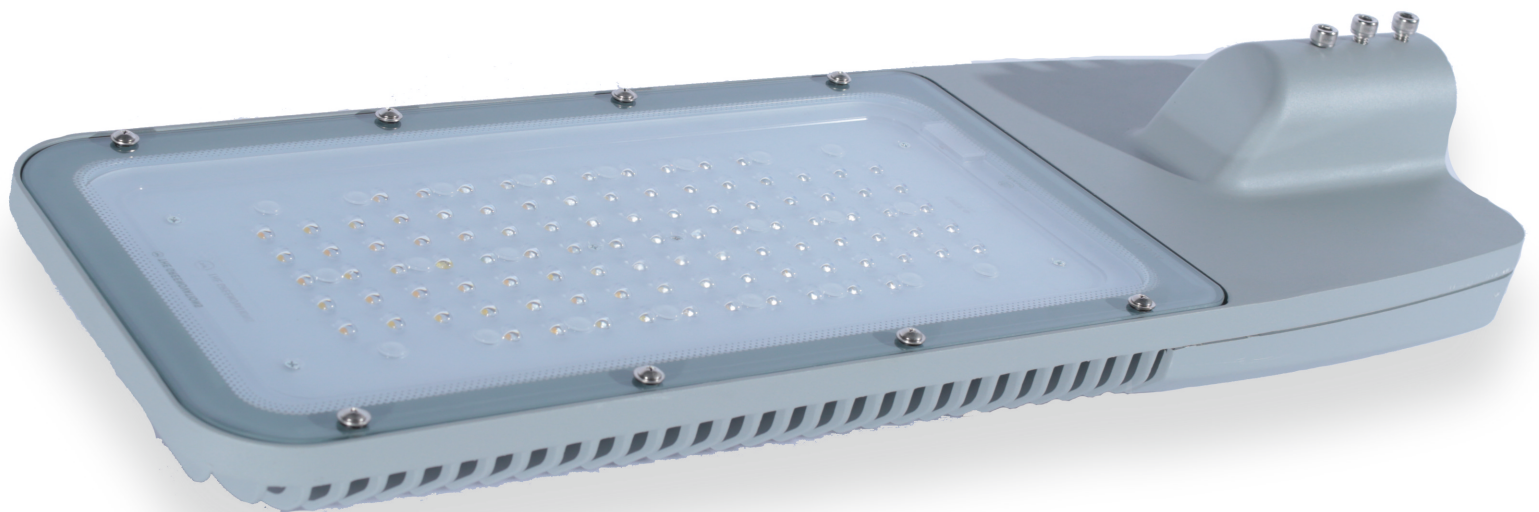




THE GREENOVATIONS

BRINGING THE FUTURE CLOSER

ENOVA H 200 to 400





ENOVA H Series

Make roads safer and sustainable

Lighting up streets and roads enhance the comfort, security and overall safety of our rapidly growing urban environments. Our ENOVA Series make an affordable LED road lighting solutions that ensures sufficient illumination on your roads.

It is designed to achieve better light uniformity and maximum spacing between poles for both pedestrian and vehicle road applications. With its die-cast aluminum housing and **CREE LED** chips, it is easy to maintain, having a long lifetime and a consistency you can count on.

It also offers 3 housing sizes and a range of beam optics to fully cater to different road configurations and conditions.

ENOVA Series perform up to **80% of energy savings** compared to conventional lamp systems, making the perfect sustainable lighting solution for any modern city.





Benefits

- **Up to 80% energy savings.** Uses significantly less energy than conventional street lighting solutions
- **Ease of maintenance.** Tool-less opening of gear compartment & gear tray replacement
- **Long fixture lifetime.** Solid die-cast housing design with ingress (IP) and surge protection
- **Long system lifetime.** Excellent thermal management to avoid early failures

Features

- World class, approbated quality components (LEDs / Driver / Housing)
- Superior W/m² performance delivered through different optics for greater flexibility to fit different road applications
- Control options for standalone or Tele-managed controls
- High quality cool and neutral white light with high color consistency

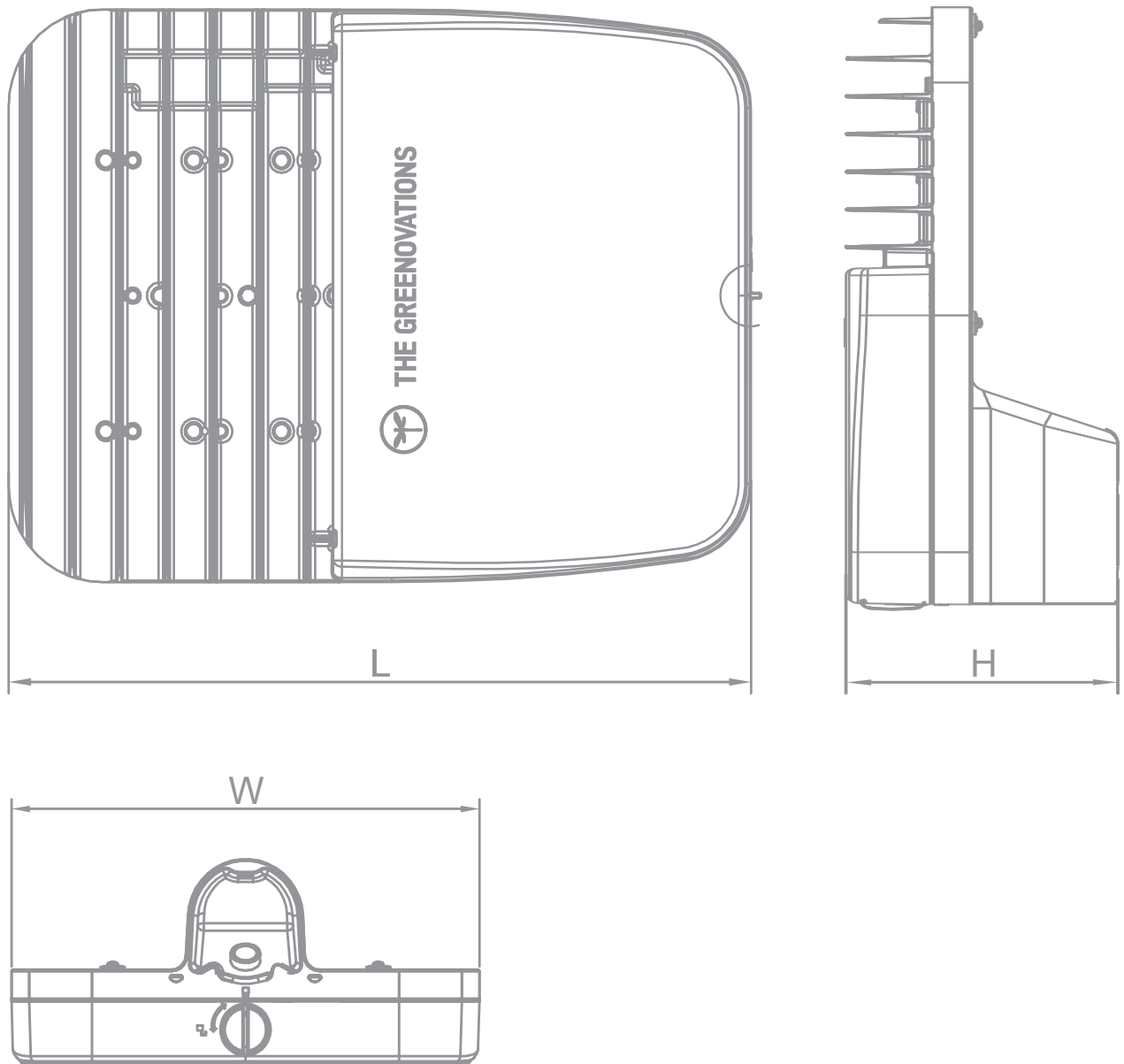
Applications

- Pedestrian category roads (P1-P6)
- Vehicle category roads (M1-M6)





Dimensional drawing



Models Dimensions

LxWxH	L (mm)	W (mm)	H (mm)
EN-01	422	318	136
EN-02	522	318	136
EN-03	853	318	136

Product specification

General Characteristics

Type	Enova Series H
Lifetime	1 million hours (90% lumen maintenance @ Ta = 35°C)
Optics	135 Degrees
Luminous Efficacy	90 lm/w (Typical) up to 180 lm/w

Mechanical

Housing material	High pressure die-cast aluminum
Gasket material	Heat resistant silicone rubber
Glass	Tempered glass
Finishing	Gray, Black color paint (customizable)

Light Technical Characteristics

Light source	LED
LED driver Sys.	Constant current or programmable driver
Lumen output	Up to 77,000 lumen
Color rendering index	Minimum 80
Color Temperature	CW-5700K

Product Data

Dimensions (LxWxH)	EN-01: 422x318x136mm
	EN-02: 522x318x136mm
	EN-03: 853x318x136mm
Weight	EN-01: 6.5kg; EN-02: 8kg; EN-03: 14kg
Certifications	CB IEC 60598, CQC, AS/NZS 1158IP65;
Classifications	IP66; IK08; Class I; RoHS
Surge Protection	20KV
Control Options	Standalone dimming program, Tele-managed CityTouch, Star Sense and Amp Light compatible NEMA and D2 Type PE Cell
Maintenance	Tool-less opening of gear compartment Tool-less gear tray replacement
Ordering	LED 428 W 220-240V More Options available as per requirements

Electrical Characteristics

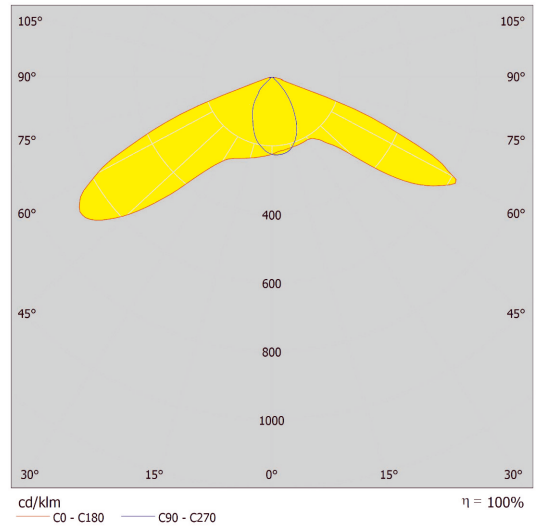
Power requirement	220-240V 50/60Hz
Power factor Drive	>0.95 (nominal power)
Current	500mA - 1050mA

Environmental Characteristics

Installation	Φ48-60mm pole, side entry
Windage area	EN-01:0.134m ² ; EN-02:0.166m ² ; EN-03:0.271m ²
Mounting height	up to 25 m
Working temp.	- 40°C < Ta < 55°C
Wind force	Up to 60m/s
Relative humidity	Up to 95%RH



LIGHT DISTRIBUTION CURVE (CRL) 140°



ENOVA H 200/250

Model	ENOVA H 200	ENOVA H 250
Power Consumption	LEDs	200W
	Driver	14W
	Total	214W
Initial Lumen Flux (5,700K)	38,500 Lm	48,400 Lm

ENOVA H 300/350

Model	ENOVA H 300	ENOVA H 400
Power Consumption	LEDs	300W
	Driver	21W
	Total	321W
Initial Lumen Flux (5,700K)	57,800Lm	77,000Lm

Technical Specifications - Enova H 200

Model	ENOVA H 200	
Beam Angle	135°	
Power Consumption	LEDs	201.0W
	Driver	7.0W
	Total	208.0W
Initial Lumen Flux (5,700K)	37,400 Lm	
Dimension	360x323x163 mm	
Net Weight	12 kg	
Color Temperature	4,000K - 5,700K (3,000k option possible)	
CRI	≥70	
Working Life	≥150,000 Hrs	
Housing Material	Aluminum	
Coating	Zinc Rich Paint	
IP Class	IP 65 (Upgradeable to IP 66)	
Insulation Class	Class I (Upgradeable to Class II)	
Working Temperature	-40C ~ 55C	
Working Humidity	10% ~ 95%	
AC Input	170 ~ 260 VAC	
DC Input	240 ~ 365 VDC	
Power Factor	≥0.98	
Warranty	LED Module, Driver, Housing 10 years	

THE GREENOVATIONS LED LIGHTING LLC
 Dubai Investment Park 2, Jebel Ali (UAE)
 T +971 (0)4 883 8883, F +971 (0)4 883 3323
www.thegreenovations.com

For future development & continuous improvements, The Greenovations reserves the right to change any technical characteristics to its products.